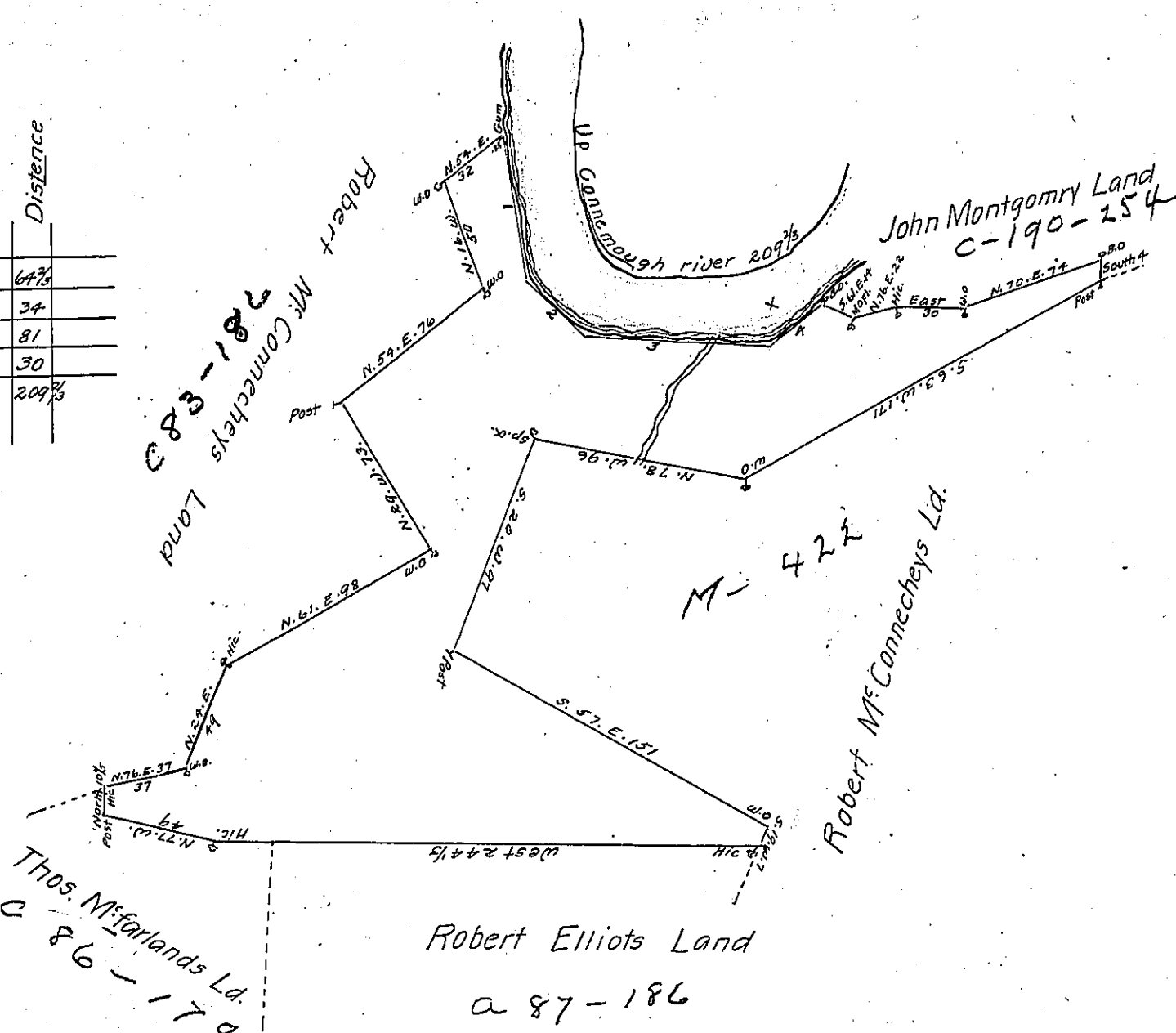


	Courses	Up Conneough River	Distance
1	S. 9. E.	64 1/2	
2	S. 40. E.	34	
3	S. 85. E.	81	
4	N. 54. E.	30	
Total Dist		209 1/2	



In pursuance of a Warrent Dated April 1st. 1788 There was Surveyd for Thomas Gallaher the above Described Tract of Land Contain- ing Two Hundred and Seven acres and allowance proportioned to Six pr. Cent. adjoining Land of Robert McConnechey and Others in Derry Township Westmoreland County Surveyd Sept. 19th. 1788.

John Moore D.S.

To John Lukens Esqr. Survr. Genl.

IN TESTIMONY that the above is a copy of the original remaining on file in the Department of Internal Affairs of Pennsylvania, made conformably to an Act of Assembly approved the 16th day of February, 1833, I have hereunto set my Hand and caused the Seal of said Department to be affixed at Harrisburg, this sixth day of January 1905

Loac D. Brown
Secretary of Internal Affairs.